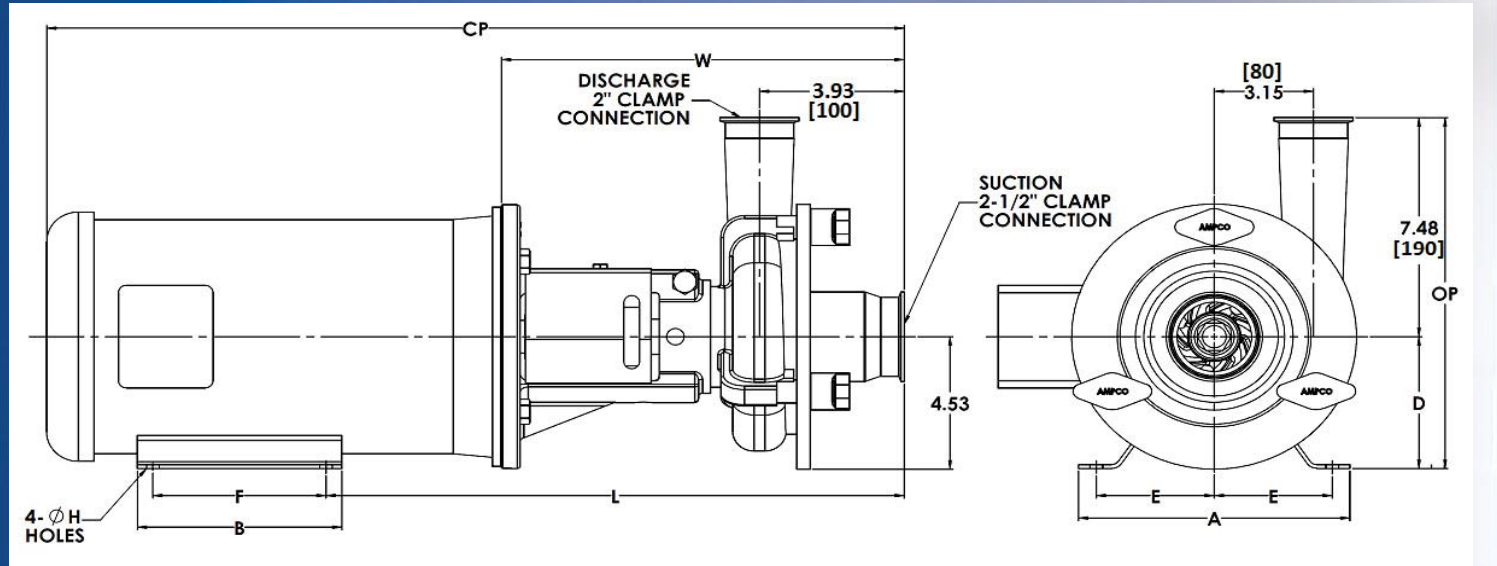


Ampco Blenders

DATA SHEET

MODEL SB-V521	2 1/2 x 2
MODEL SB-V522	2 1/2 x 2
MODEL SBH-V521	2 1/2 x 2
MODEL SBH-V522	2 1/2 x 2
MODEL SBI-V521	2 1/2 x 2
MODEL SBI-V522	2 1/2 x 2



LEG KIT OPTIONAL

TEFC MOTOR			DIMENSIONS IN INCHES (For Reference Only)										APPROX WEIGHT	
HP	RPM	FRAME	MILLIMETERS										LBS	Kg
A (typ)	B (typ)	D	E	F	ØH	L	W	CP	OP					
1 HP	1750	143TC	6 1/2	6	3 1/2	2 3/4	4	11/32	13.81	10.93	22.10	10.98	86	
			165	152	89	70	102	9	351	278	561	279	39	
1 1/2 HP	1750	145TC	6 1/2	6	3 1/2	2 3/4	5	11/32	13.81	10.93	22.10	10.98	92	
			165	152	89	70	127	9	351	278	561	279	42	
2 HP	1750	145TC	6 1/2	6	3 1/2	2 3/4	5	11/32	13.81	10.93	22.10	10.98	95	
			165	152	89	70	127	9	351	278	561	279	43	
5 HP	3500	184TC	8 5/8	6 1/2	4 1/2	3 3/4	5 1/2	13/32	16.25	12.85	26.56	11.98	127	
			219	165	114	95	140	10	413	326	675	304	58	
7 1/2 HP	3500	184TC	8 5/8	6 1/2	4 1/2	3 3/4	5 1/2	13/32	16.25	12.85	26.56	11.98	145	
			219	165	114	95	140	10	413	326	675	304	66	
10 HP	3500	215TC	9 1/2	8	5 1/4	4 1/4	7	13/32	17.13	12.85	29.26	12.73	179	
			241	203	133	108	178	10	435	326	743	323	81	
15 HP	3500	215TC	9 1/2	8	5 1/4	4 1/4	7	13/32	17.13	12.85	29.26	12.73	219	
			241	203	133	108	178	10	435	326	743	323	100	

MATERIAL SPECIFICATIONS

PART NAME	STAINLESS STEEL
Casing, Cover & Impeller	316L Stainless
Stub Shaft	316L Stainless
Adapter	304 Stainless

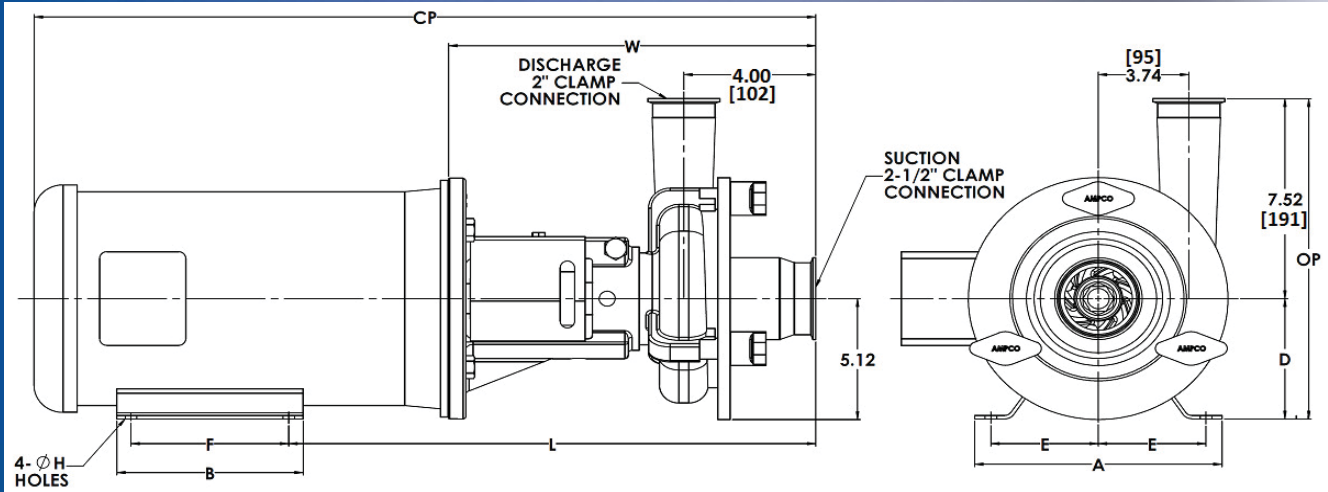


CSI 417.831.1411
csidesigns.com

Ampco Blenders

DATA SHEET

MODEL SB-V531	2½ x 2
MODEL SB-V532	2½ x 2
MODEL SBH-V531	2½ x 2
MODEL SBH-V532	2½ x 2
MODEL SBI-V531	2½ x 2
MODEL SBI-V532	2½ x 2



LEG KIT OPTIONAL

TEFC MOTOR			DIMENSIONS IN INCHES MILLIMETERS (For Reference Only)										APPROX WEIGHT
HP	RPM	FRAME	A (typ)	B (typ)	D	E	F	ØH	L	W	CP	OP	LBS Kg
1 HP	1750	143TC	6 1/2	6	3 1/2	2 3/4	4	11/32	13.81	10.93	22.10	11.02	92
			165	152	89	70	102	9	351	278	561	280	42
1½ HP	1750	145TC	6 1/2	6	3 1/2	2 3/4	5	11/32	13.81	10.93	22.10	11.02	98
			165	152	89	70	127	9	351	278	561	280	45
2 HP	1750	145TC	6 1/2	6	3 1/2	2 3/4	5	11/32	13.81	10.93	22.10	11.02	101
			165	152	89	70	127	9	351	278	561	280	46
3 HP	1750	182TC	8 5/8	6 1/2	4 1/2	3 3/4	4 1/2	13/32	16.25	12.84	26.56	12.02	131
			219	165	114	95	114	10	413	326	675	305	60
5 HP	1750	184TC	8 5/8	6 1/2	4 1/2	3 3/4	5 1/2	13/32	16.25	12.84	26.56	12.02	138
			219	165	114	95	140	10	413	326	675	305	63
5 HP	3500	184TC	8 5/8	6 1/2	4 1/2	3 3/4	5 1/2	13/32	16.25	12.84	26.56	12.02	188
			219	165	114	95	140	10	413	326	675	305	85
7½ HP	3500	184TC	8 5/8	6 1/2	4 1/2	3 3/4	5 1/2	13/32	16.25	12.84	26.56	12.02	198
			219	165	114	95	140	10	413	326	675	305	90
10 HP	3500	215TC	9 1/2	8	5 1/4	4 1/4	7	13/32	17.12	12.84	29.26	12.77	313
			241	203	133	108	178	10	435	326	743	324	142
15 HP	3500	215TC	9 1/2	8	5 1/4	4 1/4	7	13/32	17.12	12.84	29.26	12.77	334
			241	203	133	108	178	10	435	326	743	324	152
20 HP	3500	256TC	11 1/2	11 1/2	6 1/4	5	10	17/32	17.62	12.84	32.19	13.77	376
			292	292	159	127	254	13	448	326	818	350	171
25HP	3500	284TSC	12 3/4	12 3/4	7	5 1/2	9 1/2	17/32	18.01	13.25	34.72	14.52	469
			324	324	178	140	241	13	458	337	882	369	213

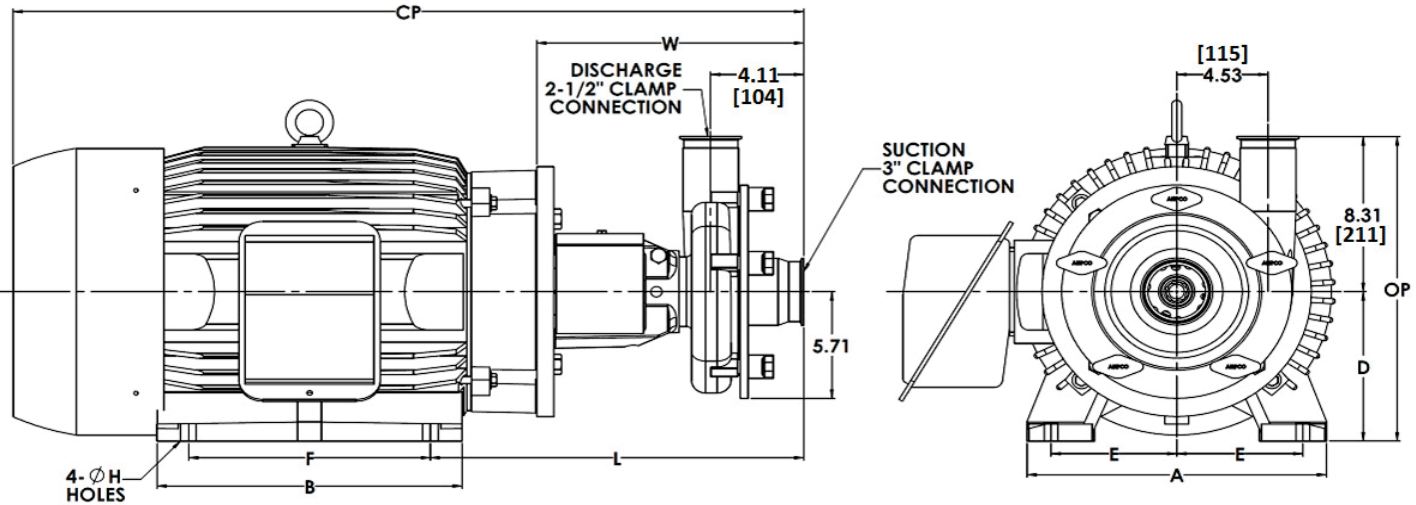
MATERIAL SPECIFICATIONS

PART NAME	STAINLESS STEEL
Casing, Cover & Impeller	316L Stainless
Stub Shaft	316L Stainless
Adapter	304 Stainless

Ampco Blenders

DATA SHEET

MODEL SB-V541	3 x 2½
MODEL SB-V542	3 x 2½
MODEL SBH-V541	3 x 2½
MODEL SBH-V542	3 x 2½
MODEL SBI-V541	3 x 2½
MODEL SBI-V542	3 x 2½



TEFC MOTOR			DIMENSIONS IN INCHES MILLIMETERS (For Reference Only)										APPROX WEIGHT
HP	RPM	FRAME	A (typ)	B (typ)	D	E	F	ØH	L	W	CP	OP	LBS Kg
2 HP	1750	145TC	6 1/2 165	6 152	3 1/2 89	2 3/4 70	5 127	11/32 9	13.81 351	10.93 278	22.10 561	11.81 300	117 53
3 HP	1750	182TC	8 5/8 219	6 1/2 165	4 1/2 114	2 3/4 70	4 1/2 114	13/32 10	16.25 413	12.84 326	26.56 675	12.81 325	147 67
5	1750	184TC	8 5/8 219	6 1/2 165	4 1/2 114	3 3/4 95	5 1/2 140	13/32 10	16.25 413	12.84 326	26.56 675	12.81 325	154 70
7½ HP	1750	213TC	9 1/2 241	8 203	5 1/4 133	4 1/4 108	5 1/2 140	13/32 10	17.12 435	12.84 326	29.26 743	13.56 344	205 93
10 HP	3500	215TC	9 1/2 241	8 203	5 1/4 133	4 1/4 108	7 178	13/32 10	17.12 435	12.84 326	29.26 743	13.56 344	201 91
15 HP	3500	215TC	9 1/2 241	8 203	5 1/4 133	4 1/4 108	7 178	13/32 10	17.12 435	12.84 326	29.26 743	13.56 344	241 110
20 HP	3500	256TC	11 1/2 292	11 1/2 292	6 1/4 159	5 127	10 254	17/32 13	17.62 448	12.84 326	32.19 818	14.56 370	368 167
25 HP	3500	284TSC	12 3/4 324	12 3/4 324	7 178	5 1/2 140	9 1/2 241	17/32 13	18.01 458	13.25 337	34.72 882	15.31 389	461 210
30 HP	3500	286TSC	12 3/4 324	12 3/4 324	7 178	5 1/2 140	11 279	17/32 13	18.01 458	13.25 337	34.72 882	15.31 389	483 220
40 HP	3500	324TSC	14 1/2 368	14 356	8 203	6 1/4 159	10 1/2 267	21/32 17	18.01 458	13.25 337	38.40 975	16.31 414	597 271
50 HP	3500	326TSC	14 1/2 368	14 356	8 203	6 1/4 159	12 305	21/32 17	18.51 470	13.25 337	38.40 975	16.31 414	706 321

MATERIAL SPECIFICATIONS

PART NAME	STAINLESS STEEL
Casing, Cover & Impeller	316L Stainless
Stub Shaft	316L Stainless
Adapter	304 Stainless

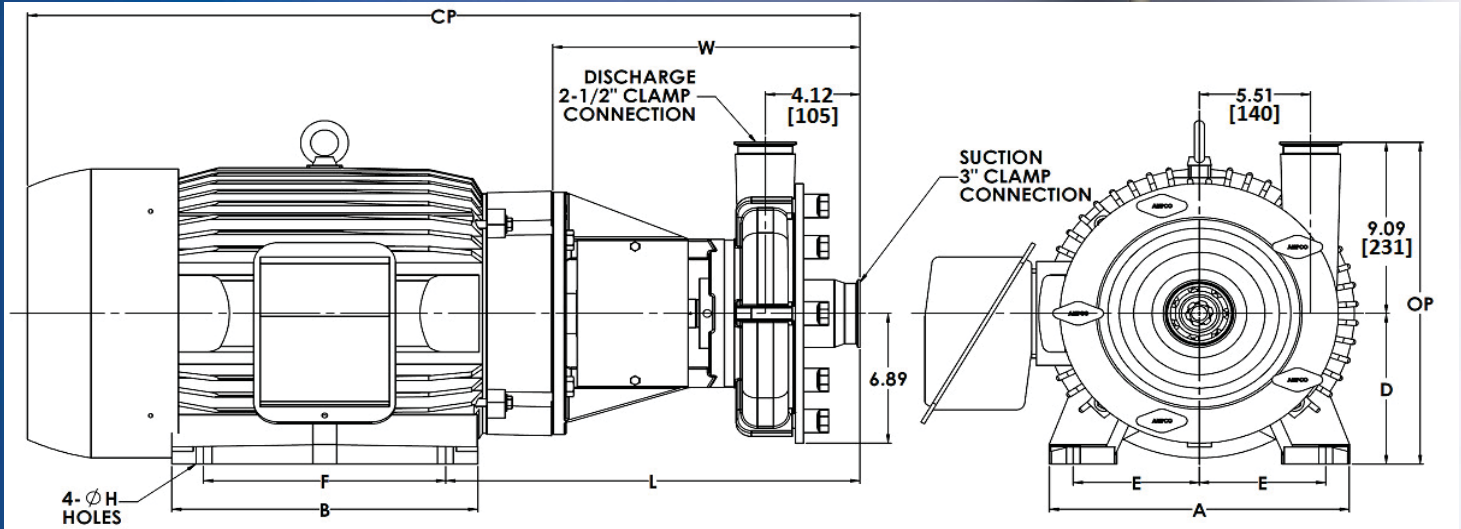


CSI 417.831.1411
csidesigns.com

Ampco Blenders

DATA SHEET

MODEL SB-V551	3 x 2½
MODEL SB-V552	3 x 2½
MODEL SBH-V551	3 x 2½
MODEL SBH-V552	3 x 2½
MODEL SBI-V551	3 x 2½
MODEL SBI-V552	3 x 2½



TEFC MOTOR			DIMENSIONS IN INCHES MILLIMETERS (For Reference Only)										APPROX WEIGHT
HP	RPM	FRAME	A (typ)	B (typ)	D	E	F	ØH	L	W	CP	OP	LBS Kg
5	1750	184TC	8 5/8	6 1/2	4 1/2	3 3/4	5 1/2	13/32	16.43	13.03	26.74	13.59	199
			219	165	114	95	140	10	417	331	679	345	90
7½ HP	1750	213TC	9 1/2	8	5 1/4	4 1/4	5 1/2	13/32	17.31	13.03	29.44	14.34	249
			241	203	133	108	140	10	440	331	748	364	113
10 HP	1750	215TC	9 1/2	8	5 1/4	4 1/4	7	13/32	17.31	13.03	29.44	14.34	259
			241	203	133	108	178	10	440	331	748	364	118
15 HP	1750	254TC	11 1/2	11 1/2	6 1/4	5	8 1/4	17/32	17.81	13.03	32.38	15.34	371
			292	292	159	127	210	13	452	331	822	390	169
20 HP	1750	256TC	11 1/2	11 1/2	6 1/4	5	10	17/32	17.81	13.03	32.38	15.34	394
			292	292	159	127	254	13	452	331	822	390	179
25 HP	3500	284TSC	12 3/4	12 3/4	7	5 1/2	9 1/2	17/32	18.29	13.53	35.00	16.09	483
			324	324	178	140	241	13	465	344	889	409	220
30 HP	3500	286TSC	12 3/4	12 3/4	7	5 1/2	11	17/32	18.29	13.53	35.00	16.09	505
			324	324	178	140	279	13	465	344	889	409	230
40 HP	3500	324TSC	14 1/2	14	8	6 1/4	10 1/2	21/32	20.47	15.21	40.36	17.09	619
			368	356	203	159	267	17	520	386	1025	434	281
50 HP	3500	326TSC	14 1/2	14	8	6 1/4	12	21/32	20.47	15.21	40.36	17.09	728
			368	356	203	159	305	17	520	386	1025	434	331
75 HP	3500	365TSC	17	15	9	7	12 1/4	21/32	21.10	15.21	42.59	18.09	728
			432	381	229	178	311	17	536	386	1082	460	331

MATERIAL SPECIFICATIONS

PART NAME	STAINLESS STEEL
Casing, Cover & Impeller	316L Stainless
Stub Shaft	316L Stainless
Adapter	304 Stainless



CSI 417.831.1411
csidesigns.com