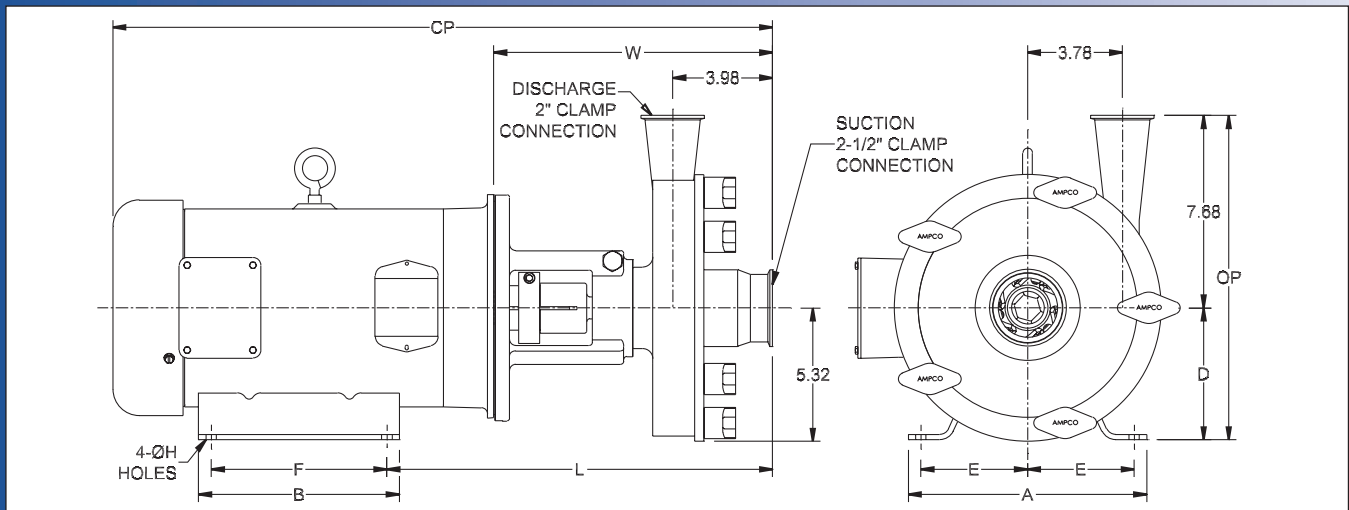
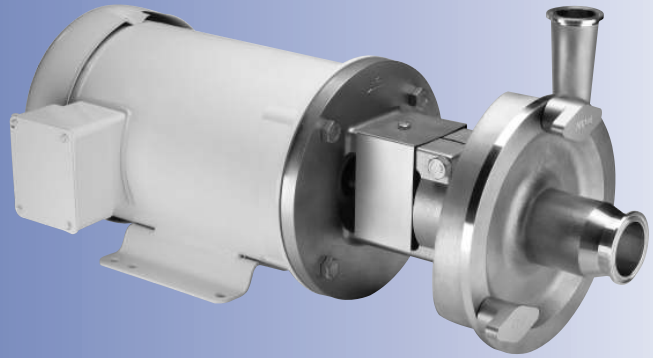


Ampco Centrifugal Pumps

DATA SHEET

MODEL LC-R41 2½X2
MODEL LC-R42 2½X2



| TEFC MOTOR | | | DIMENSIONS IN INCHES (For Reference Only) | | | | | | | | | | APPROX WEIGHT (LBS) |
|------------|------|--------|---|---------|-------|-------|-------|-------|-------|-------|-------|-------|---------------------------|
| HP | RPM | FRAME | A (typ) | B (typ) | D | E | F | ØH | L | W | CP | OP | |
| 1 | 1750 | 143TC | 6-1/2 | 6 | 3-1/2 | 2-3/4 | 4 | 11/32 | 13.02 | 10.27 | 21.33 | 11.18 | 91 |
| 1-1/2 | 1750 | 145TC | 6-1/2 | 6 | 3-1/2 | 2-3/4 | 5 | 11/32 | 13.02 | 10.27 | 21.33 | 11.18 | 97 |
| 2 | 1750 | 145TC | 6-1/2 | 6 | 3-1/2 | 2-3/4 | 5 | 11/32 | 13.02 | 10.27 | 21.33 | 11.18 | 100 |
| 3 | 1750 | 182TC | 8-5/8 | 6-1/2 | 4-1/2 | 3-3/4 | 4-1/2 | 13/32 | 14.58 | 11.08 | 24.77 | 12.18 | 130 |
| 7-1/2 | 3500 | 184TC | 8-5/8 | 6-1/2 | 4-1/2 | 3-3/4 | 5-1/2 | 13/32 | 14.58 | 11.08 | 26.26 | 12.18 | 150 |
| 10 | 3500 | 215TC | 9-1/2 | 8 | 5-1/4 | 4-1/4 | 7 | 13/32 | 15.33 | 11.08 | 26.26 | 12.93 | 184 |
| 15 | 3500 | 215TC | 9-1/2 | 8 | 5-1/4 | 4-1/4 | 7 | 13/32 | 15.33 | 11.08 | 26.35 | 12.93 | 224 |
| 20 | 3500 | 256TC | 11-1/2 | 11-1/2 | 6-1/4 | 5 | 10 | 17/32 | 16.95 | 12.20 | 31.54 | 13.93 | 329 |
| 25 | 3500 | 284TSC | 12-3/4 | 12-3/4 | 7 | 5-1/2 | 9-1/2 | 17/32 | 18.27 | 13.52 | 36.65 | 14.68 | 447 |

MATERIAL SPECIFICATIONS

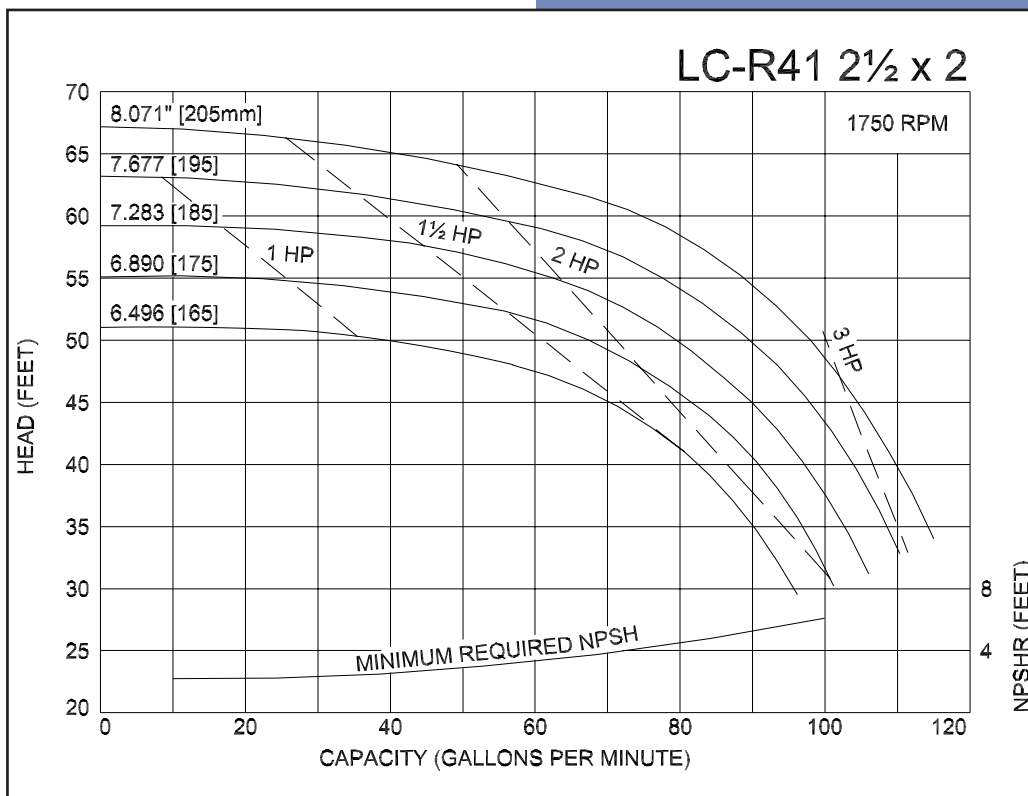
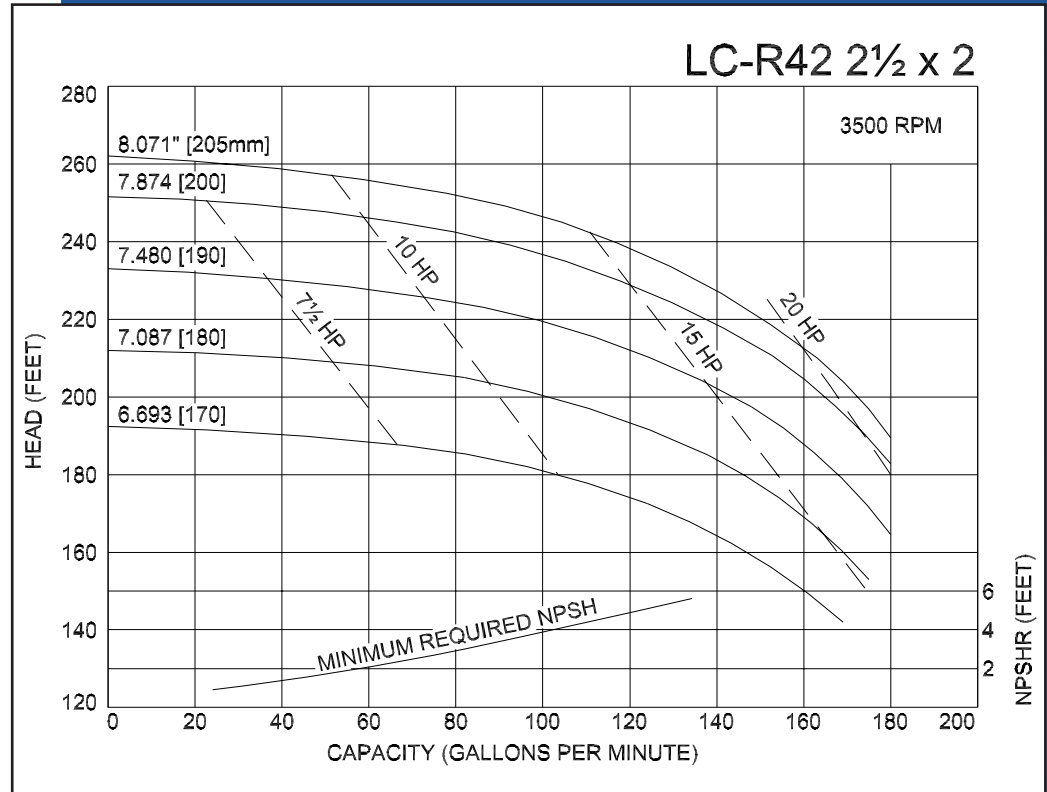
| PART NAME | STAINLESS STEEL |
|--------------------------|-----------------|
| Casing, Cover & Impeller | 316L Stainless |
| Stub Shaft | 316L Stainless |
| Adapter | 304 Stainless |

MODEL LC-R41 2½ X2
MODEL LC-R42 2½ X2

Ampco Centrifugal Pumps

Curves show approximate characteristics based on clear 68° water.
Rated point is guaranteed.

LC-Series pumps have standard stainless steel adapters and silicon carbide vs. carbon seals.



LC pumps are in conformance with 3A sanitary standards for centrifugal and positive rotary pumps for milk and milk products, Number 02-09.

LC-Series pumps have a standard 32RA (150 grit) finish, on all product contact surfaces.

**Ampco
Pumps
Company**

4424 West Mitchell Street
Milwaukee, Wisconsin 53214
PHONE (414) 643-1852
FAX (414) 643-4452